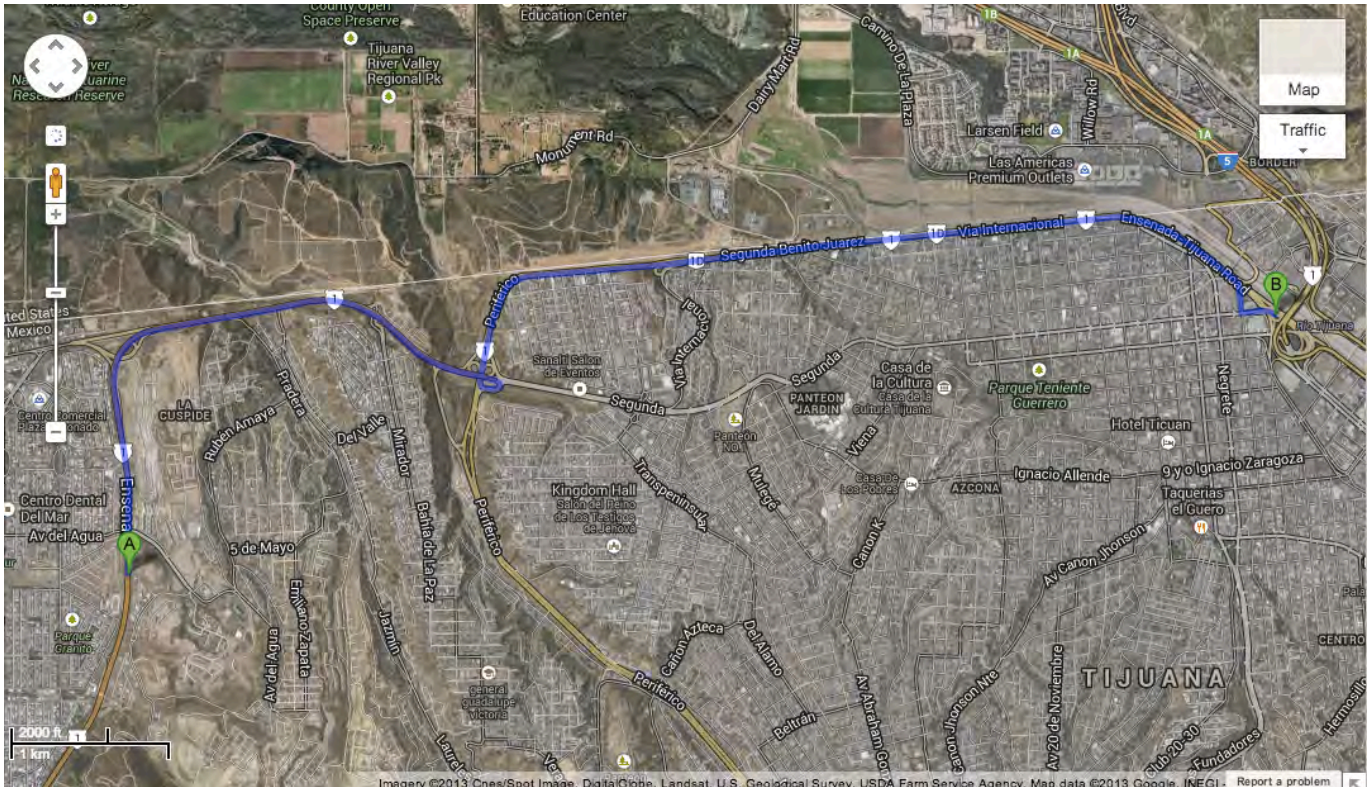
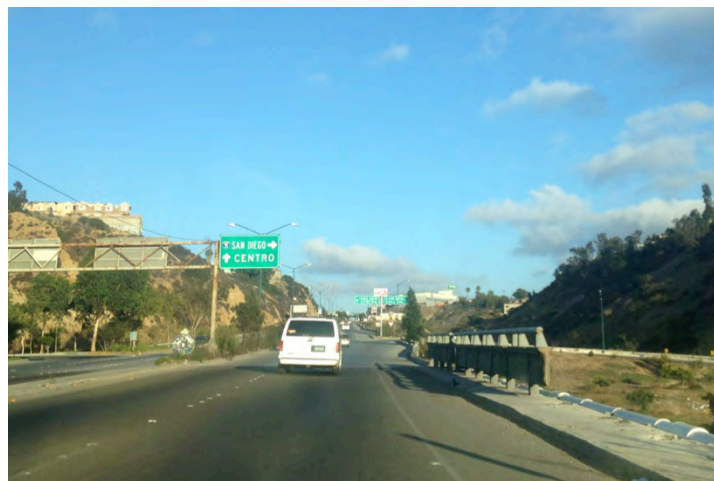


Directions to the San Ysidro Border Crossing in Tijuana from the Toll Road



1. Heading north on the toll road, you will go through the last toll booth. Playas de Tijuana will be on your left. Continue on this road for a few miles.



2. You will come over the hill and into the valley where you'll see signs for SAN DIEGO, INTERSTATE 5 directing you to the right.



3. Follow the signs for SAN DIEGO/ ZONA RIO to take the off ramp on the right. You will loop around on the off ramp.



4. After taking the off ramp, get over to the left, following lanes for SAN DIEGO/ZONA RIO and continue on the road up the hill.



5. The road will continue up the hill and curve to the right. You will drive on Via Internacional alongside the border for a few miles, following signs for San Diego.



6. You will see a sign for SAN DIEGO I-5/PASEO DE LOS HEROES. Get in the right lane.



7. Turn off to the right of the PEMEX station, following signs for SAN DIEGO I-5/PASEO DE LOS HEROES.



8. You will approach a traffic light in one block. Smart & Final will be on your left. Turn left at the traffic light onto Calle Segunda.



9. The border entrance will be straight ahead. For regular border lanes, you will need to be in one of the two far left lanes (the signs can be confusing, just remember to stay to the LEFT of the concrete barrier). For SENTRI or Fast Pass, you will follow signs for Col. Federal, going just to the RIGHT of the concrete barrier.

