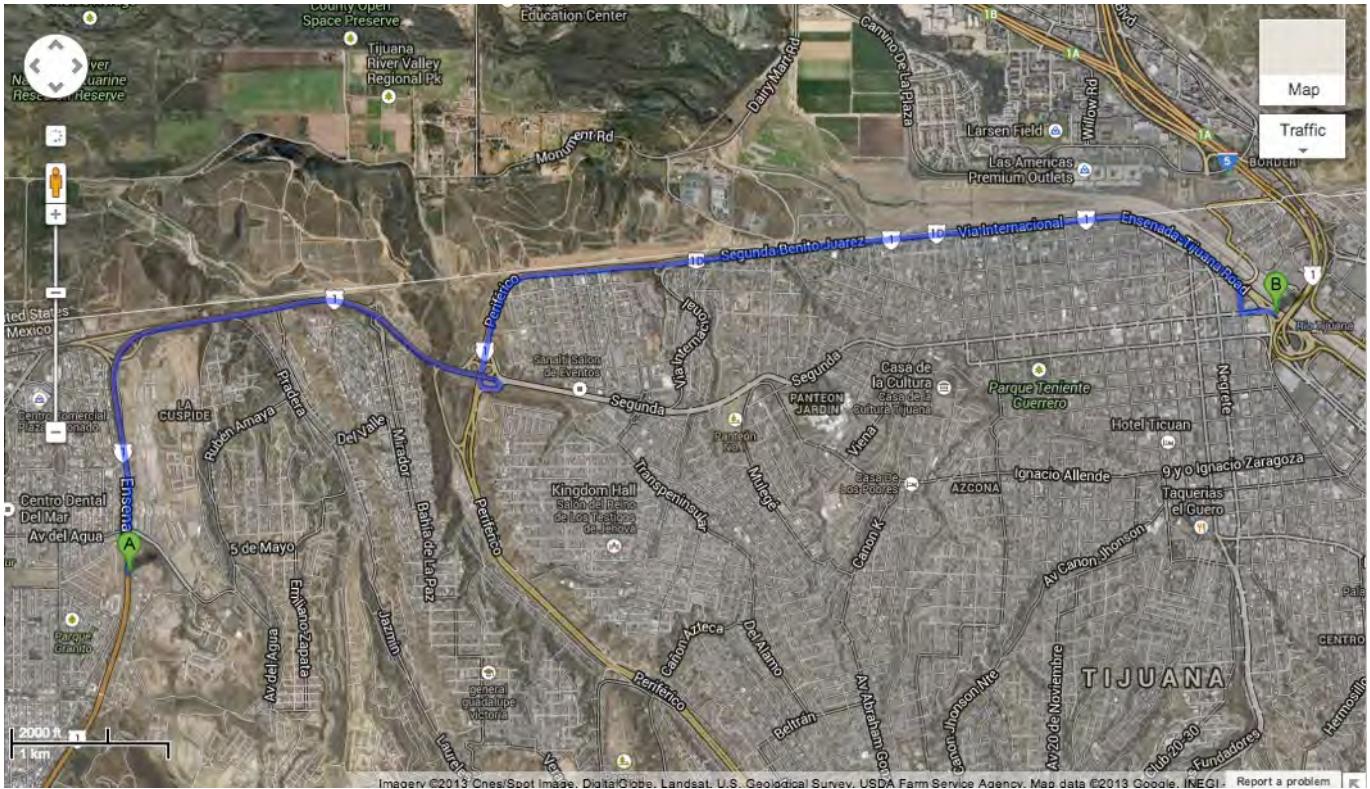
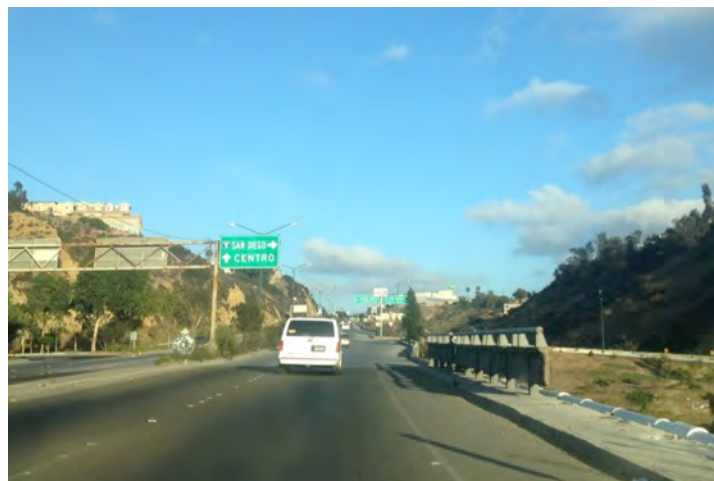


Directions to the San Ysidro FAST PASS Border Crossing in Tijuana from the Toll Road



1. Heading north on the toll road, you will go through the last toll booth. Playas de Tijuana will be on your left. Continue on this road for a few miles.



2. You will come over the hill and into the valley where you'll see signs for SAN DIEGO, INTERSTATE 5 directing you to the right.



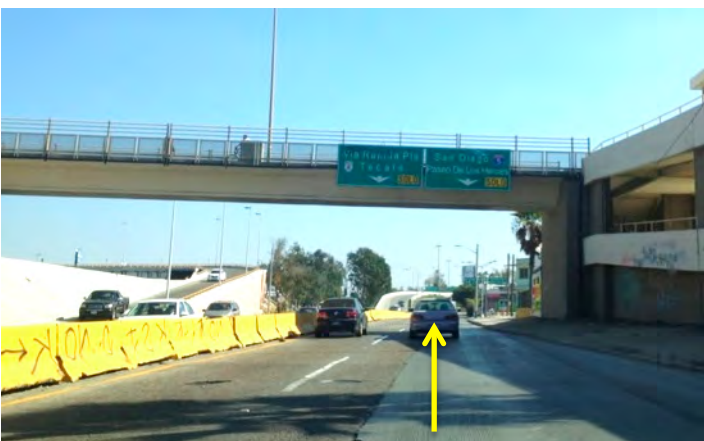
3. Follow the signs for SAN DIEGO/ ZONA RIO to take the off ramp on the right. You will loop around on the off ramp.



4. After taking the off ramp, get over to the left, following lanes for SAN DIEGO/ZONA RIO and continue on the road up the hill.



5. The road will continue up the hill and curve to the right. You will drive on Via Internacional alongside the border for a few miles, following signs for San Diego.



6. You will see a sign for SAN DIEGO I-5/PASEO DE LOS HEROES. Get in the right lane.



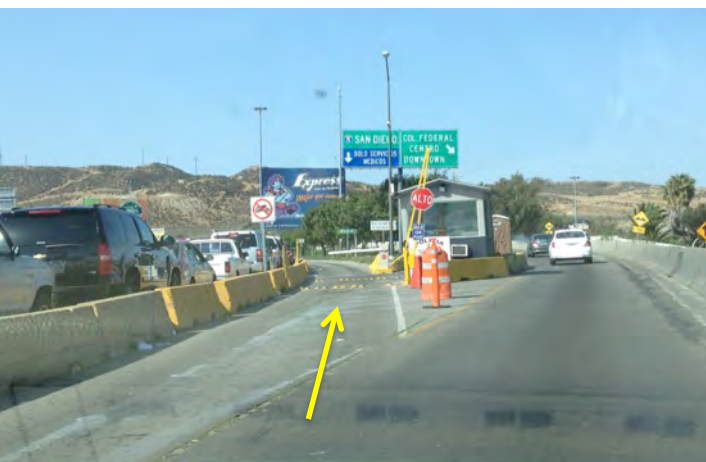
7. Turn off to the right of the PEMEX station, following signs for SAN DIEGO I-5/PASEO DE LOS HEROES.



8. You will approach a traffic light in one block. Smart & Final will be on your left. Turn left at the traffic light onto Calle Segunda (be aware that there will be no sign directing you to turn to get to the border here, you have to know the turn).



9. The border entrance will be straight ahead. For Fast Pass, you will follow signs for Col. Federal in the third lane from the left, going just to the RIGHT of the concrete barrier (where the white car is headed in the photo). You will continue up the ramp and over a bridge.



10. Once up the ramp, go to the LEFT when the road splits. You will stop at the booth to hand the officer your paperwork. Even if you see cones blocking off the entrance, it is not closed. Pull up and someone will come out of the booth.